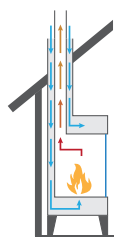


# VALENTINO 1300 THREE-SIDED CAMPFIRE INDOOR GAS FIREPLACE

## Balanced Flue System

### BALANCED FLUE SYSTEM

Valentino is a gas fireplace (NG or LPG) with a balanced flue system that utilizes closed combustion and does not affect the air in the room. The coaxial pipe both supplies the fireplace with fresh air and extracts any combustion products outside.



BALANCED  
FLUE SYSTEM



### ADVANCED FEATURES

The **thermostat** maintains a desired room temperature  
**Modular Ignition** reduces water vapour condensation  
**Eco Flow** regulates flame height over time

### CONVENIENT REMOTE CONTROL

Valentino offers convenient control options: the included handheld remote, an optional Smart Home System controller or a mobile app on your smartphone.



### ENCLOSED BEHIND GLASS

Valentino is enclosed with ceramic glass. Optionally you can choose panels with antireflective coating that reduce reflections making the flame look even more vibrant.

### SAFETY FEATURES

- Flame detecting sensor
- Child lock

### TWO-SECTION LINEAR BURNER

The modular linear burner introduces a classic fire design to your interior. You can choose from standard and optional decorative accessories – ceramic logs, white pebbles, black diamond embers and black glass gravel.



# Valentino 1300 Three-Sided

(Balanced Flue Gas Fireplace)

Fuel type	Natural Gas or LPG
Flue and fresh air intake	Ø 200/130 mm concentric flue (coaxial pipe)
Nominal heat input	NG max. 11.3 kW LPG max. 9.9 kW
Gas consumption	NG max. 1.2 m3/h LPG max. 0.8 kg/h
Flame height regulation	15 levels
Materials	steel, ceramic glass
Power supply	230V / remote control: 2x AA batteries
Weight	140.0 kg
Application	for indoor use only

CONTROL OPTIONS

Ways to control the fireplace remotely.



included



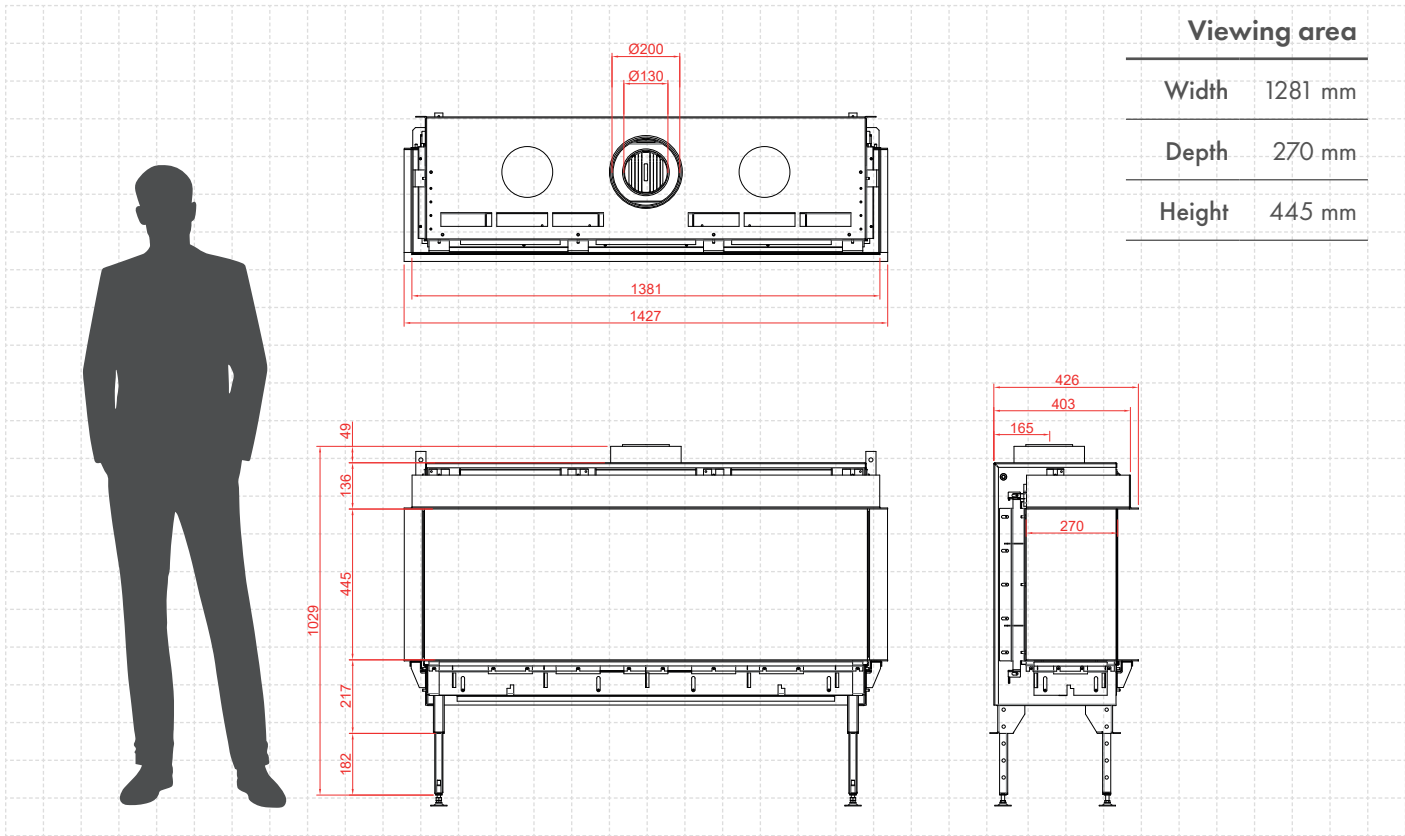
optional



compatible

‘PLANIKA CONTROL’ APP

Control the fire with your smartphone.



All product specifications and data are subject to change without notice and are believed to be accurate as of the date hereof. Planika Sp. z o.o., its affiliates, agents, and employees, and all persons acting on its or their behalf (collectively, "Planika Sp. z o.o."), disclaim any and all liability for any errors, inaccuracies or incompleteness contained in any document or in any other disclosure relating to any product. To the maximum extent permitted by applicable law, Planika Sp. z o.o. disclaims any and all liability arising out of the application or use of any product. No license, express or implied, by estoppel or otherwise, to any intellectual property rights is granted by this document or by any conduct of Planika Sp. z o.o.. Customers using or selling Planika Sp. z o.o.'s products not expressly indicated for use in such applications do so entirely at their own risk and agree to fully indemnify Planika Sp. z o.o. for any damages arising or resulting from such use or sale. The provided fuel consumption is based on laboratory testing. The actual consumption of individual devices may vary. The images are indicative only.

# MOON

## FREESTANDING OUTDOOR GAS FIREPLACE

*Gas Technology*



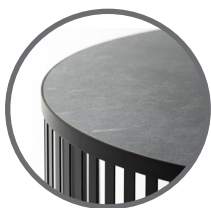
### 2in1 FIRE TABLE

A revolutionary concept in outdoor living, the gas fire-pit integrated into a table, allows guests to enjoy the enchanting glow and comforting warmth of the fire-pit while gathered around the same table.



### GAS CARTRIDGES

Experience the convenience of gas cartridges hidden inside a closed compartment: simply replace them when empty for endless evenings of comfort and charm, all with the ease of a door-secured, hassle-free system.



### CERAMIC TABLETOP

Designed for outdoor use, Moon features a durable, scratch and stain resistant countertop with a natural stone texture, enhancing the beauty of any garden or patio.

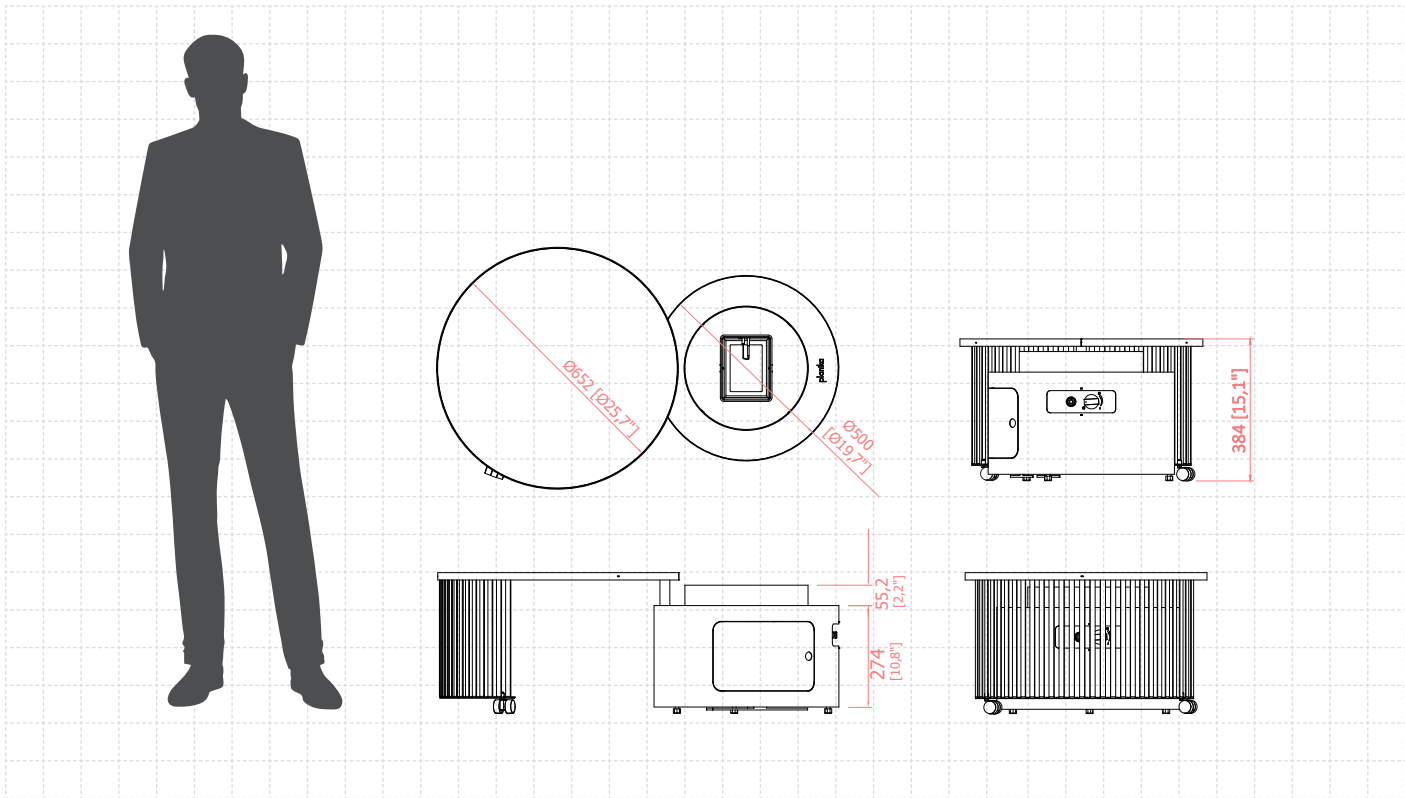


### EASY CONTROL

Ignite with a button push and adjust the flame height with a knob turn, providing a hassle-free and customizable fire experience.

Moon  
(Gas Technology)

Fuel type	LPG
Heat output	5.0 - 8.0 kW
Gas consumption	max. 0.4 - 0.5 kg/h burning time up to 55h
Gas pressure	37 mbar
Power supply	AAA battery powered control panel
Flue	not required
Flame height regulation	yes
Materials	powder coated galvanized steel, ceramics
Application	for outdoor use only



All product specifications and data are subject to change without notice and are believed to be accurate as of the date hereof. Planika Sp. z o.o., its affiliates, agents, and employees, and all persons acting on its or their behalf (collectively, "Planika Sp. z o.o."), disclaim any and all liability for any errors, inaccuracies or incompleteness contained in any document or in any other disclosure relating to any product. To the maximum extent permitted by applicable law, Planika Sp. z o.o. disclaims any and all liability arising out of the application or use of any product. No license, express or implied, by estoppel or otherwise, to any intellectual property rights is granted by this document or by any conduct of Planika Sp. z o.o.. Customers using or selling Planika Sp. z o.o.'s products not expressly indicated for use in such applications do so entirely at their own risk and agree to fully indemnify Planika Sp. z o.o. for any damages arising or resulting from such use or sale. The provided fuel consumption is based on laboratory testing. The actual consumption of individual devices may vary. The images are indicative only.